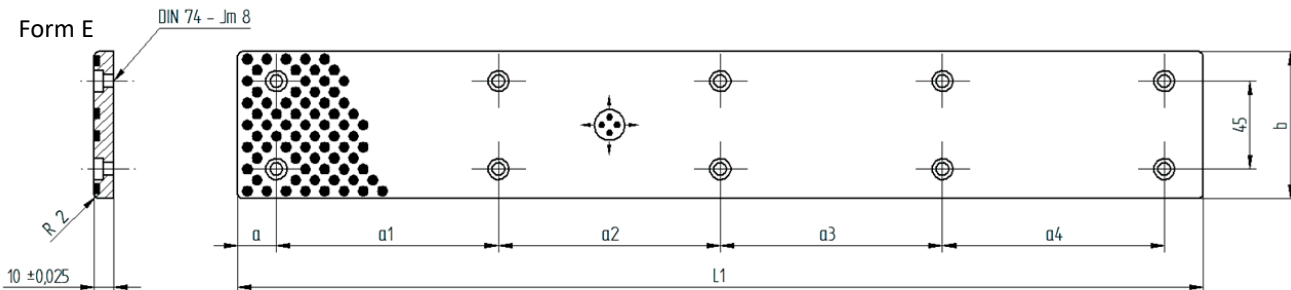
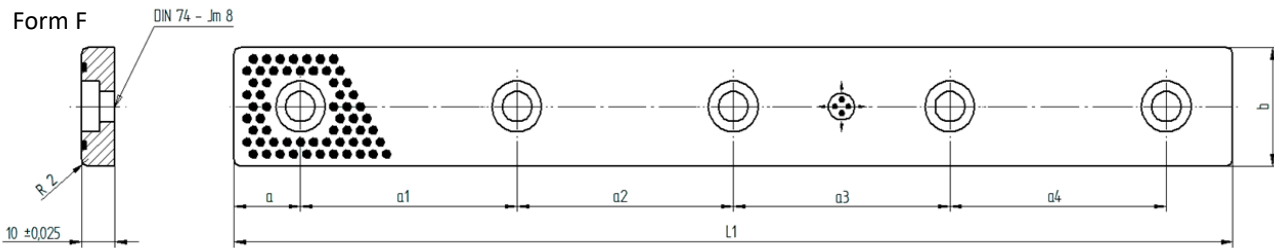
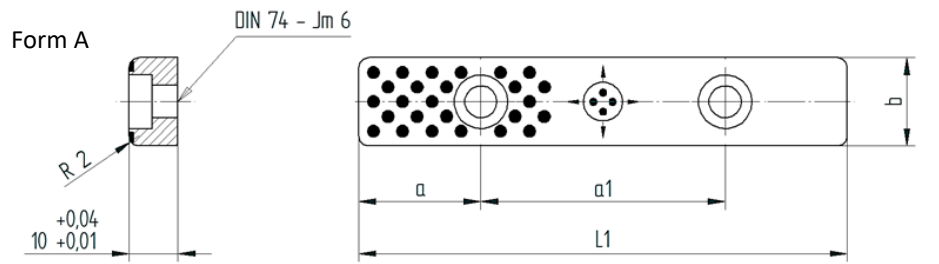


GLP01

Wartungsfreie Flachleiste

Self-lubricating flat guide bar

Similar to: 2961.70, SOLP



b	L1	a	a1	a2	a3	a4	Form	Schraube DIN 7984	Anzahl Bohrungen	Art.Nr.
18	75	15	45	-	-	-	A	M6x20	2	GLP01.018.075
18	100	25	50	-	-	-	A	M6x20	2	GLP01.018.100
18	125	25	75	-	-	-	A	M6x20	2	GLP01.018.125
18	150	25	100	-	-	-	A	M6x20	2	GLP01.018.150
28	75	15	45	-	-	-	A	M6x20	2	GLP01.028.075
28	100	25	50	-	-	-	A	M6x20	2	GLP01.028.100
28	125	25	75	-	-	-	A	M6x20	2	GLP01.028.125
28	150	25	100	-	-	-	A	M6x20	2	GLP01.028.150
35	100	20	60	-	-	-	F	M8x20	2	GLP01.035.100
35	150	20	55	55	-	-	F	M8x20	3	GLP01.035.150
35	200	20	55	50	55	-	F	M8x20	4	GLP01.035.200
35	250	20	70	70	70	-	F	M8x20	4	GLP01.035.250
35	300	20	65	65	65	65	F	M8x20	5	GLP01.035.300
35	350	20	80	75	75	80	F	M8x20	5	GLP01.035.350
38	75	15	45	-	-	-	A	M6x20	2	GLP01.038.075
38	100	25	50	-	-	-	A	M6x20	2	GLP01.038.100
38	125	25	75	-	-	-	A	M6x20	2	GLP01.038.125
38	150	25	100	-	-	-	A	M6x20	2	GLP01.038.150
48	75	15	45	-	-	-	A	M6x20	2	GLP01.048.075
48	100	25	50	-	-	-	A	M6x20	2	GLP01.048.100
48	125	25	75	-	-	-	A	M6x20	2	GLP01.048.125
48	150	25	100	-	-	-	A	M6x20	2	GLP01.048.150
50	100	20	60	-	-	-	F	M8x20	2	GLP01.050.100
50	150	20	55	55	-	-	F	M8x20	3	GLP01.050.150
50	200	20	55	50	55	-	F	M8x20	4	GLP01.050.200
50	250	20	70	70	70	-	F	M8x20	4	GLP01.050.250
50	300	20	65	65	65	65	F	M8x20	5	GLP01.050.300
50	350	20	80	75	75	80	F	M8x20	5	GLP01.050.350
75	150	20	110	-	-	-	E	M8x20	4	GLP01.075.150
75	200	20	80	80	-	-	E	M8x20	6	GLP01.075.200
75	250	20	105	105	-	-	E	M8x20	6	GLP01.075.250
75	300	20	85	90	85	-	E	M8x20	8	GLP01.075.300
75	400	20	120	120	120	-	E	M8x20	8	GLP01.075.400
75	500	20	115	115	115	115	E	M8x20	10	GLP01.075.500